



Line 1600 CNDDDB Wildlife Map 1 of 7

Pipeline Safety & Reliability Project

- Line 1600 Segment

- - -

Proposed Project Route

1-Mile Project Buffer

City/County Boundary
- CNDDDB Animals

●

Dulzura pocket mouse

■

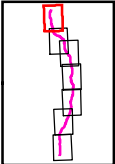
golden eagle

■

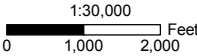
orangethroat whiptail

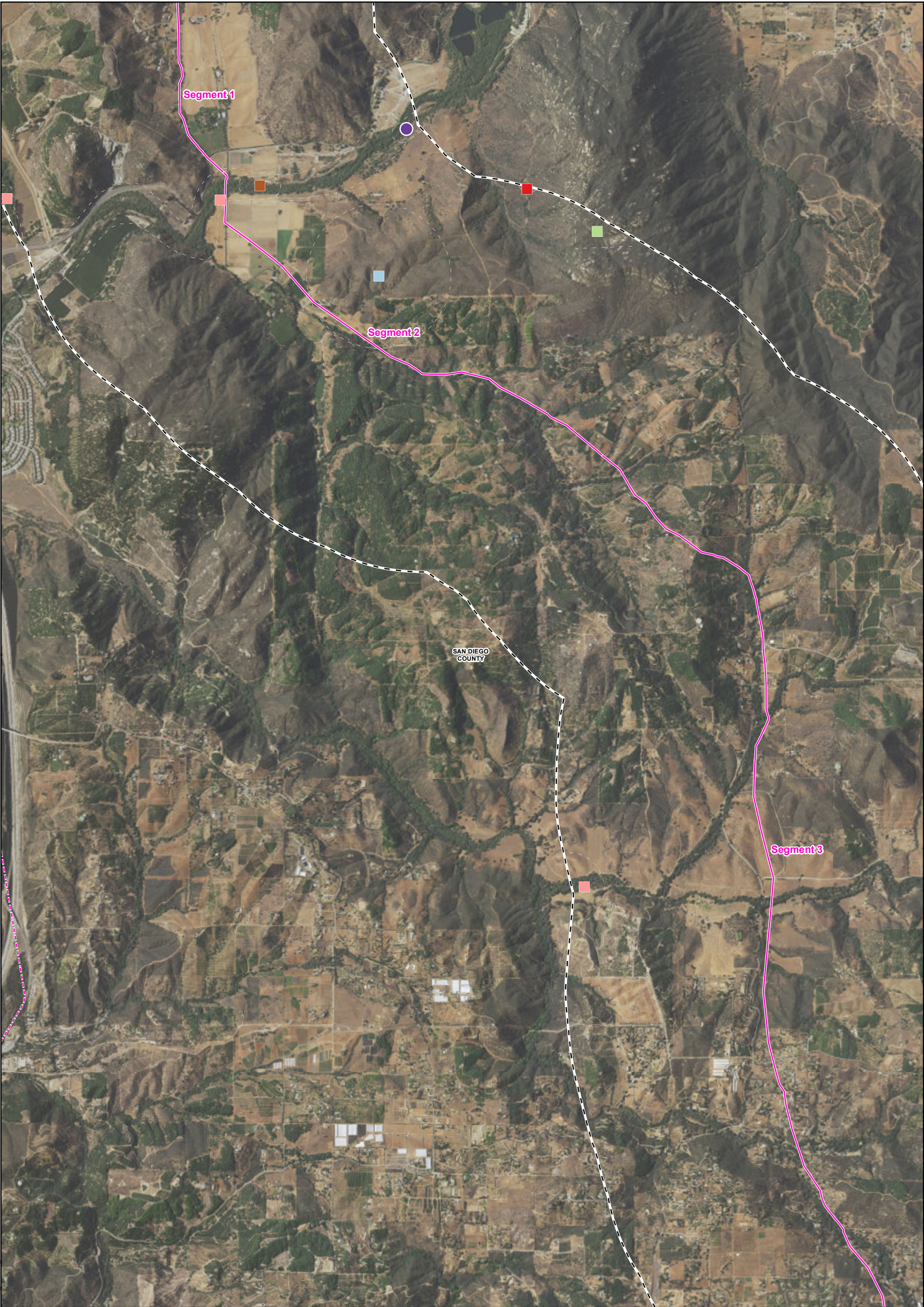
■

red-diamond rattlesnake



The California Natural Diversity Database (CNDDDB) contains location records (known as occurrences) of rare and sensitive plant and animal species. An occurrence can represent an individual, population, nest site, den, or stand. This map depicts CNDDDB occurrences for sensitive animals within one mile of the Line 1600 alignment. The dashed line surrounding each occurrence displays the accuracy of the source location (e.g., the bigger the circle, the less accurate the source is). The information shown on this map is preliminary and is intended for evaluating Project alternatives.





Line 1600 CNDDDB Wildlife Map 2 of 7

Pipeline Safety & Reliability Project

- Line 1600 Segment

--- Proposed Project Route

└ 1-Mile Project Buffer

□ City/County Boundary

CNDDDB Animals

● arroyo toad

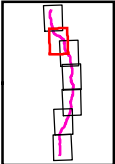
■ southwestern willow flycatcher

■ coastal cactus wren

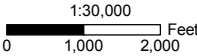
■ golden eagle

■ least Bell's vireo

■ orangethroat whiptail



The California Natural Diversity Database (CNDDDB) contains location records (known as occurrences) of rare and sensitive plant and animal species. An occurrence can represent an individual, population, nest site, den, or stand. This map depicts CNDDDB occurrences for sensitive animals within one mile of the Line 1600 alignment. The dashed line surrounding each occurrence displays the accuracy of the source location (e.g., the bigger the circle, the less accurate the source is). The information shown on this map is preliminary and is intended for evaluating Project alternatives.

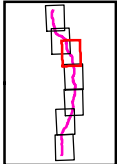




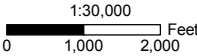
Line 1600 CNDDDB Wildlife Map 3 of 7

Pipeline Safety & Reliability Project

- Line 1600 Segment
1-Mile Project Buffer
City/County Boundary
- CNDDDB Animals
coast horned lizard
coastal whiptail
least Bell's vireo



The California Natural Diversity Database (CNDDDB) contains location records (known as occurrences) of rare and sensitive plant and animal species. An occurrence can represent an individual, population, nest site, den, or stand. This map depicts CNDDDB occurrences for sensitive animals within one mile of the Line 1600 alignment. The dashed line surrounding each occurrence displays the accuracy of the source location (e.g., the bigger the circle, the less accurate the source is). The information shown on this map is preliminary and is intended for evaluating Project alternatives.





Line 1600 CNDDDB Wildlife Map 4 of 7

Pipeline Safety & Reliability Project

- Line 1600 Segment

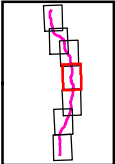
- - - Proposed Project Route

└─ 1-Mile Project Buffer

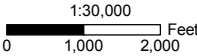
□ City/County Boundary
- CNDDDB Animals

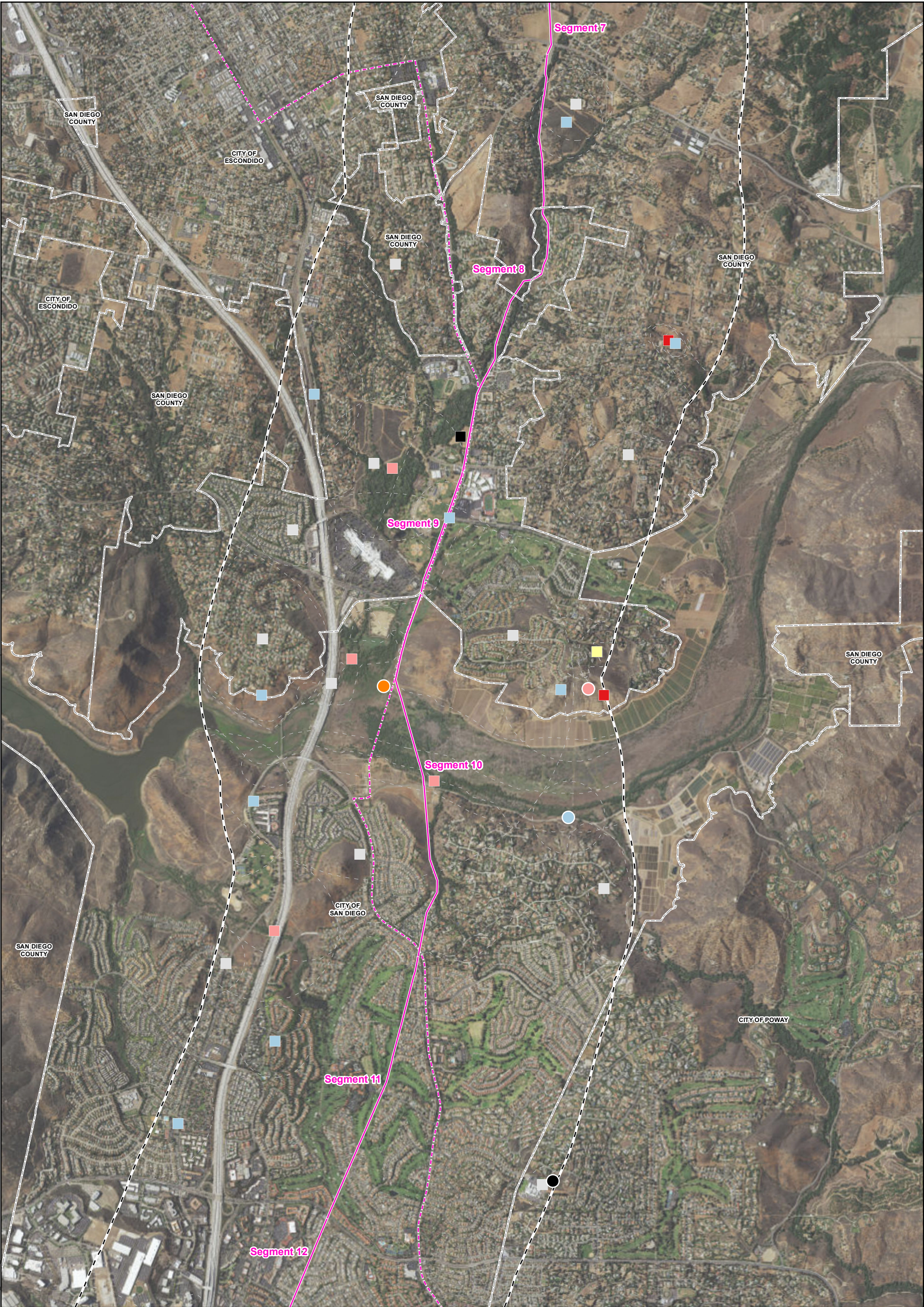
● Dulzura pocket mouse

■ least Bell's vireo



The California Natural Diversity Database (CNDDDB) contains location records (known as occurrences) of rare and sensitive plant and animal species. An occurrence can represent an individual, population, nest site, den, or stand. This map depicts CNDDDB occurrences for sensitive animals within one mile of the Line 1600 alignment. The dashed line surrounding each occurrence displays the accuracy of the source location (e.g., the bigger the circle, the less accurate the source is). The information shown on this map is preliminary and is intended for evaluating Project alternatives.





Line 1600 CNDDDB Wildlife Map 5 of 7

Pipeline Safety & Reliability Project

- Line 1600 Segment

--- Proposed Project Route

└ 1-Mile Project Buffer

□ City/County Boundary

CNDDDB Animals

● Bell's sage sparrow

● San Diego black-tailed jackrabbit

● San Diego desert woodrat

● Swainson's hawk

● coast horned lizard

■ coastal California gnatcatcher

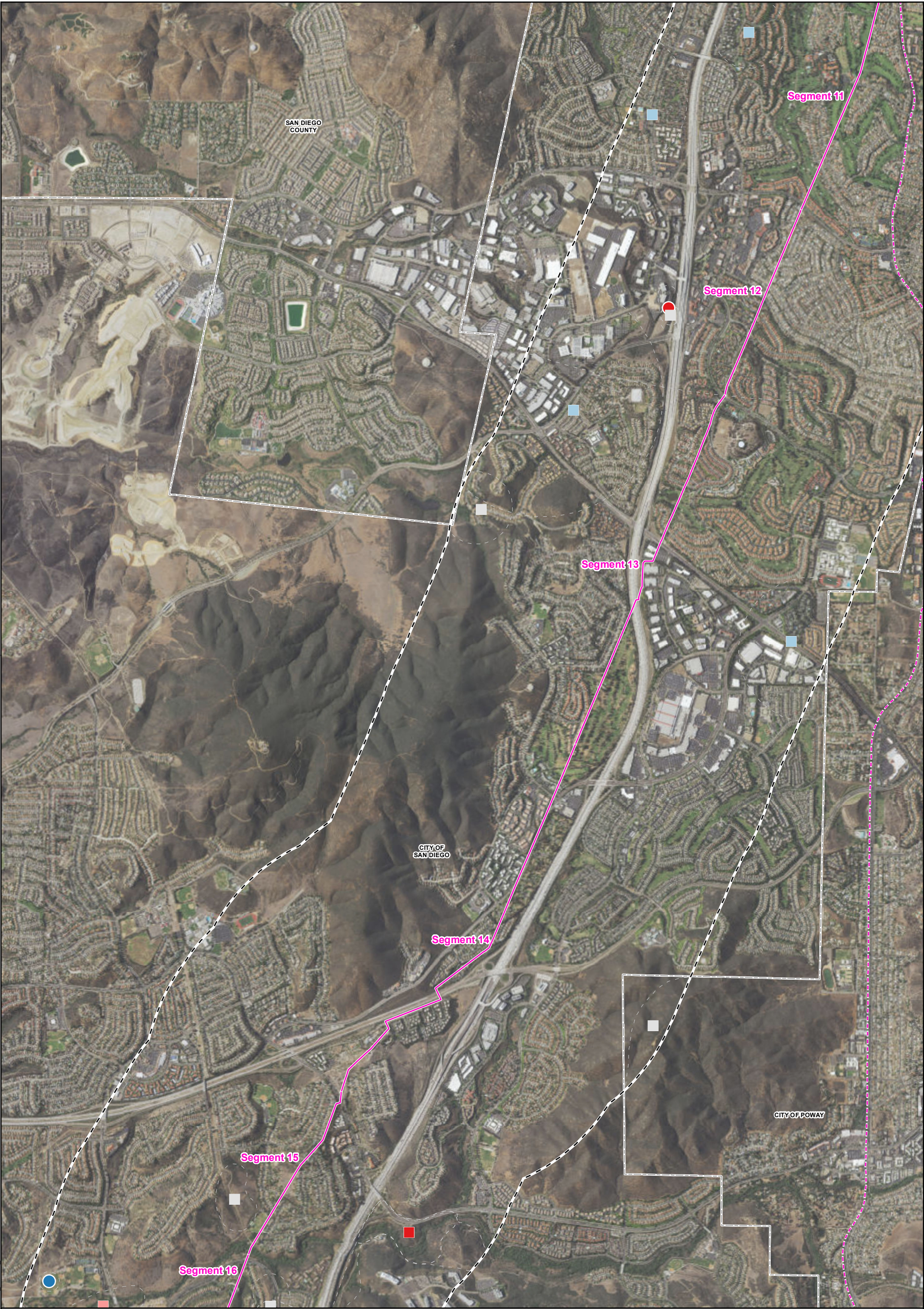
■ coastal cactus wren

■ least Bell's vireo

■ orangethroat whiptail

■ southern California rufous-crowned sparrow

■ tricolored blackbird
- The California Natural Diversity Database (CNDDDB) contains location records (known as occurrences) of rare and sensitive plant and animal species. An occurrence can represent an individual, population, nest site, den, or stand. This map depicts CNDDDB occurrences for sensitive animals within one mile of the Line 1600 alignment. The dashed line surrounding each occurrence displays the accuracy of the source location (e.g., the bigger the circle, the less accurate the source is). The information shown on this map is preliminary and is intended for evaluating Project alternatives.
-
-
-
-
-
-
- MXDs\ad\loc\1600_CNDDDB_Animals_v2.mxd 9/28/2016



Line 1600 CNDDDB Wildlife Map 6 of 7

Pipeline Safety & Reliability Project

- Line 1600 Segment

— Proposed Project Route

— 1-Mile Project Buffer

— City/County Boundary

CNDDDB Animals

● Coronado Island skink

● San Diego desert woodrat

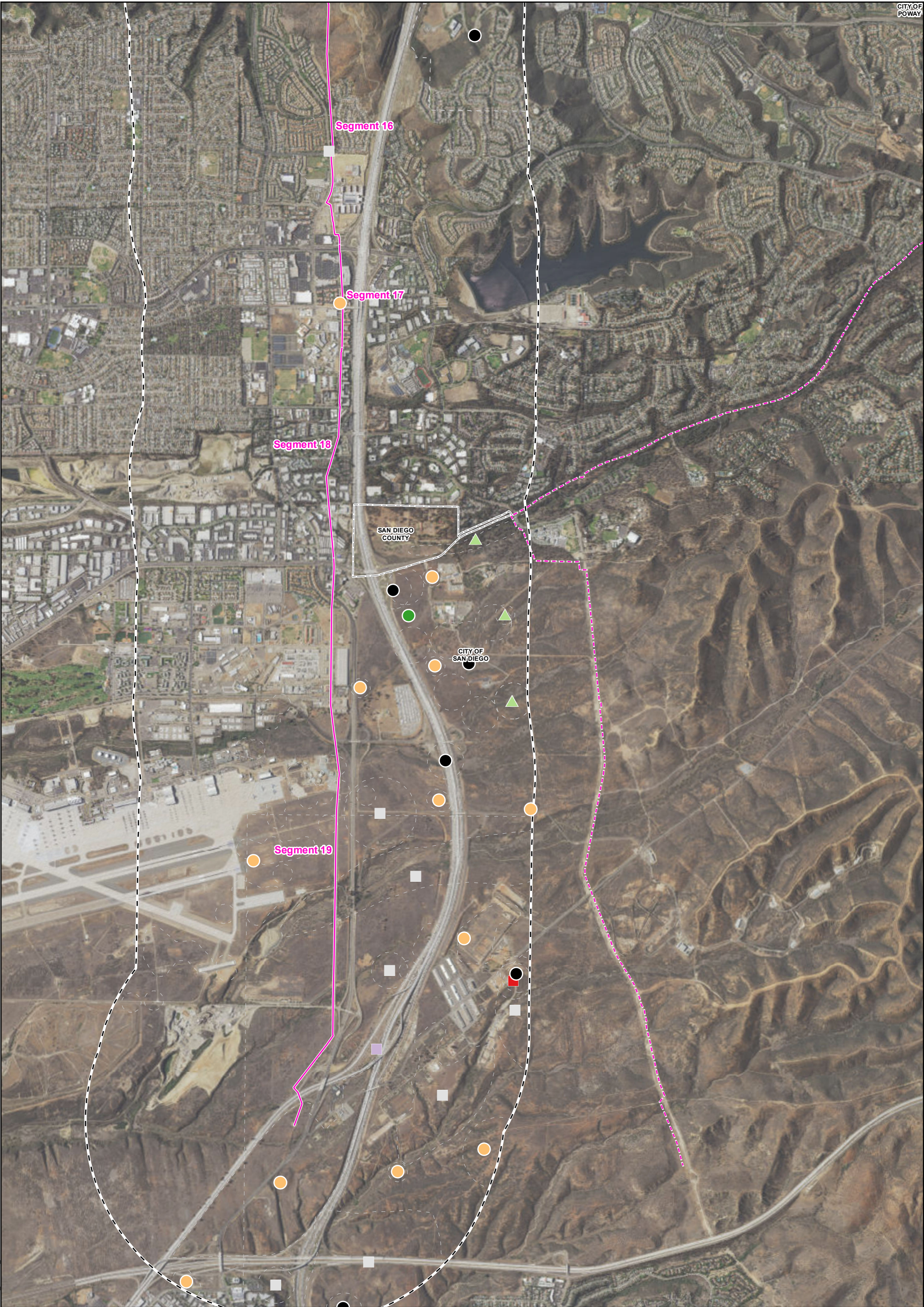
■ coastal California gnatcatcher

■ coastal cactus wren

■ least Bell's vireo

■ orangethroat whiptail

■ southern California rufous-crowned sparrow
- The California Natural Diversity Database (CNDDDB) contains location records (known as occurrences) of rare and sensitive plant and animal species. An occurrence can represent an individual, population, nest site, den, or stand. This map depicts CNDDDB occurrences for sensitive animals within one mile of the Line 1600 alignment. The dashed line surrounding each occurrence displays the accuracy of the source location (e.g., the bigger the circle, the less accurate the source is). The information shown on this map is preliminary and is intended for evaluating Project alternatives.
-
-
-
-
-



Line 1600 Segment

Proposed Project Route

1-Mile Project Buffer

City/County Boundary

CNDDDB Animals

Riverside fairy shrimp

San Diego fairy shrimp

coast horned lizard

coastal California gnatcatcher

orangethroat whiptail

prairie falcon

two-striped gartersnake

western spadefoot

The California Natural Diversity Database (CNDDDB) contains location records (known as occurrences) of rare and sensitive plant and animal species. An occurrence can represent an individual, population, nest site, den, or stand. This map depicts CNDDDB occurrences for sensitive animals within one mile of the Line 1600 alignment. The dashed line surrounding each occurrence displays the accuracy of the source location (e.g., the bigger the circle, the less accurate the source is). The information shown on this map is preliminary and is intended for evaluating Project alternatives.

010002000

Feet

SoCalGas

SDGE

NSIGNIA ENVIRONMENTAL

MXDs\ad\loc\L 1600 CNDDDB Animals v2.mxd 9/28/2016